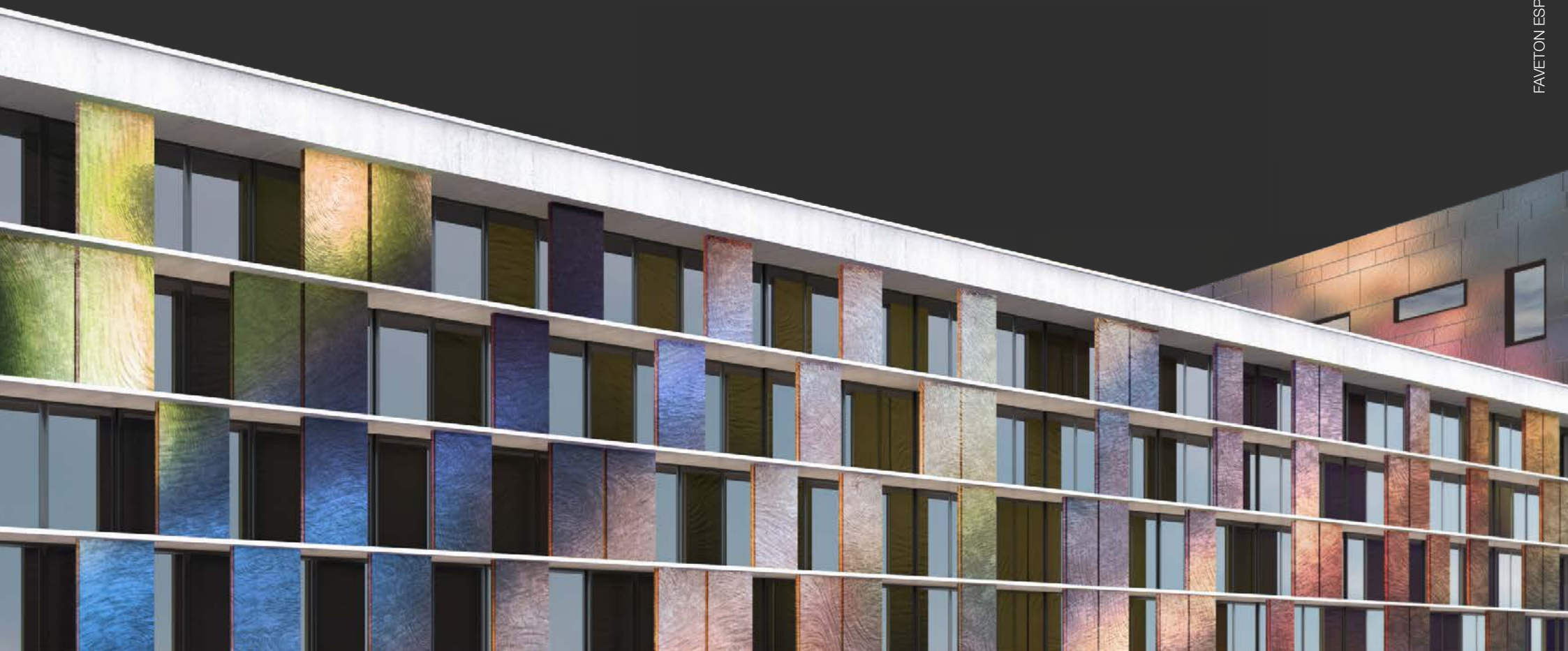
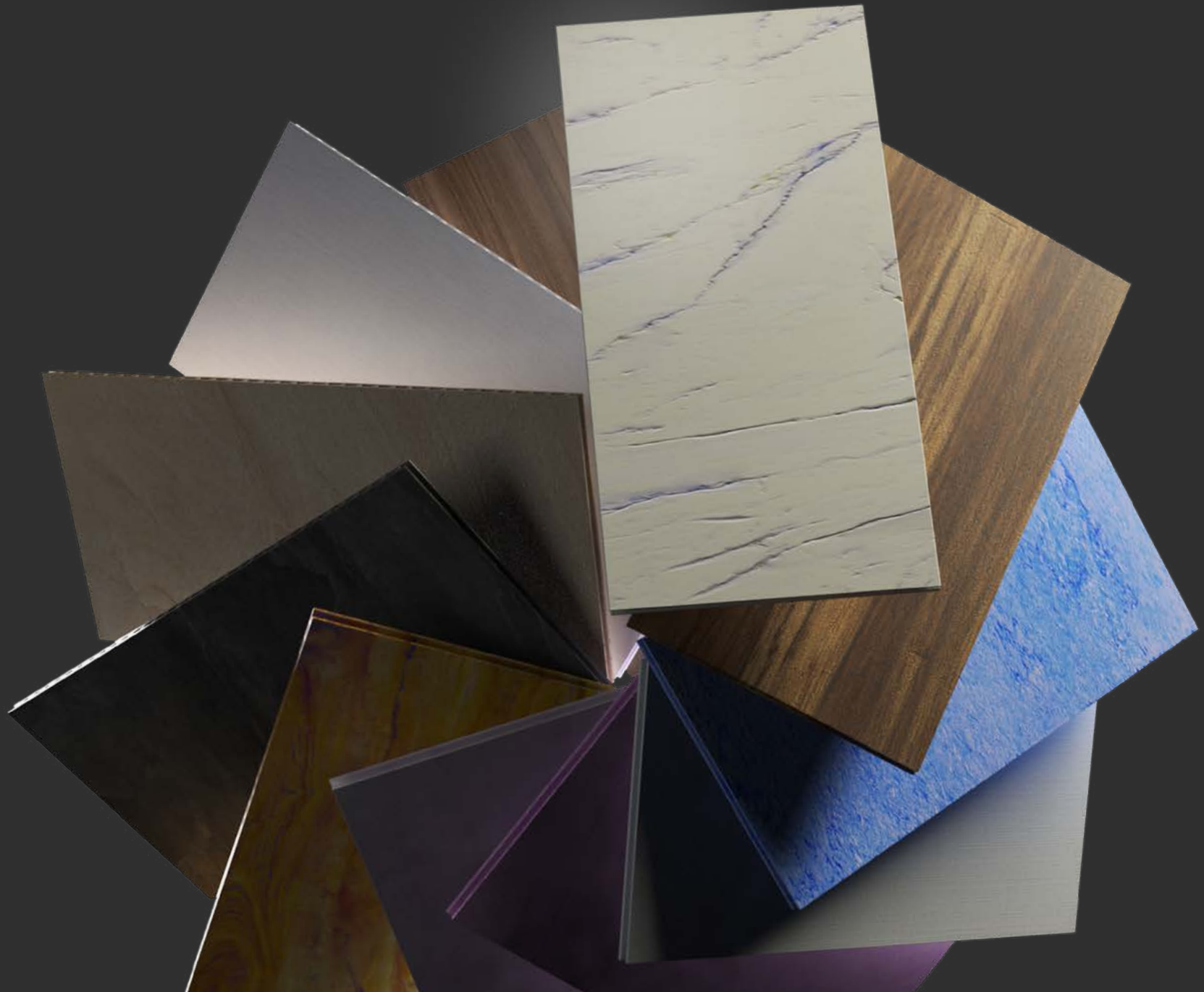


INNNOVA<sup>®</sup>  
BY FAVETON<sup>®</sup>

Product Catalogue  
May / 2018



- 1 \_ What is **INNOVA** BY **FAVETON**
- 2 \_ Technical description of the product
- 3 \_ Technical detail of the system
- 4 \_ Texture Models





# INNOVA<sup>®</sup>

## BY FAVETON<sup>®</sup>

### What is INNOVA by FAVETON?

**INNOVA by FAVETON** is a product developed by **FAVETON**, which combines the **maximum technology in terms of digital printing together with an innovative assembly system**. This system allows large format extruded ceramic plates to be installed in different sizes and oriented in different positions, providing great versatility to the ventilated ceramic facade.

With **INNOVA by FAVETON**, the range of possibilities opens up in an unusual way, **allowing architects to expand significantly their creativity**, completing the catalogue of textures with new ones such as stone, wood, marble, cement... Elements that reproduce the beauty of nature without losing the excellent properties of ceramics.

**INNOVA by FAVETON** is designed to be combined with the full range of **FAVETON** ceramic products, giving an innovative touch that, along with the quality and tradition of ceramics, **get the building a unique personality**.



Ventilated Facade System  
**ACQUA**

CARACTERÍSTICAS. PROPERTIES.	NORMA. RULE.	VALORES FAVETON. FAVETON VALUES.
Tolerancias. <b>Tolerances.</b>	ISO 10545-2	- Longitud (Dirección de Extrusión) <b>Lenght (Extrusion Direction)</b> +/- 1 mm* - Altura <b>Height</b> +/- 2 mm* - Espesor <b>Thickness</b> +/- 10% * - Rectitud (Dirección de Extrusión) <b>Straightness (Extrusion Direction)</b> ▼ +/- 0,3% de la longitud <b>of length</b> - Ortogonalidad <b>Rectangulativity</b> ▼ +/- 1% de la altura <b>of length</b> - Planitud Superficie <b>Surface flatness</b> +/- 0,5% de la diagonal o de la altura <b>of diagonal or height</b>
(*) Según dimensiones de formato. (*) According to dimensions of format.		
Absorción de agua. <b>Water absorption.</b>	ISO 10545-3	<1% ó 3-6% según color <b>&lt;1% or 3-6% depending on color</b>
Resistencia a la flexión. <b>Bending strength.</b>	ISO 10545-4	FVC 15-20 N/mm <sup>2</sup> - FVB 14-18 N/mm <sup>2</sup> según color <b>FVC 15-20 N/mm<sup>2</sup> - FVB 14-18 N/mm<sup>2</sup> depending on color</b>
Dilatación térmica lineal. <b>Linear thermal expansion.</b>	ISO 10545-8	Coeficiente de dilatación $5,7 \times 10^{-6}$ (K <sup>-1</sup> ). Ensayo ITC. <b>Coefficient of expansion <math>5,7 \times 10^{-6}</math> (K<sup>-1</sup>). Test ITC.</b>
Resistencia al choque térmico. <b>Resistance to thermal shock.</b>	ISO 10545-9	Según ensayo hasta 145°C inalterable. <b>Unalterable up to 145°C, according to test.</b>
Expansión por humedad. <b>Moisture expansion.</b>	ISO 10545-10	Valor medio <0,1 mm/m, valor máximo <0,1 mm/m. Ensayo ITC <b>Mean value &lt;0,1 mm/m, maximum value &lt;0,1 mm/m. Test ITC</b>
Resistencia a la helada. <b>Frost resistance.</b>	ISO 10545-12	Inalterable según ensayo (100 ciclos + 5°C a -5°C). <b>Unalterable according to test (100 cycles + 5°C a -5°C).</b>
Resistencia química. <b>Chemical resistance.</b>	ISO 10545-13	Solo se aplica en condiciones corrosivas. Mínimo clase G y B. <b>Only applicable in corrosive conditions. At least G and B class.</b>
Resistencia a las manchas. <b>Stain resistance.</b>	ISO 10545-14	Mínimo CLASE 3. <b>At least CLASS 3.</b>
Diferencias de color. <b>Color differences.</b>	ISO 10545-16	ΔE <2.





**INNOVA by FAVETON** has been designed to be placed both vertically and horizontally. This flexibility on installation, along with its versatile format that covers widths from 200mm to 600mm and lengths from 200mm to 1500m, **makes a versatile product adaptable to the different modulations or technical needs**, expanding the range of buildings that fit in this solution.

Aesthetically, this is important because in this way, we will be able to align the joints between the plates with the corners, the jambs and the lintels in order to achieve a better appearance. Economically, this is important because the waste of material and cuts in site are reduced to a minimum.

These new tiles are **compatible with the standard FAVETON SAH system**, which means that the technical experience acquired with this system is fully applicable to these new tiles, ensuring an optimal fixation to the structure through a hidden fixing system certified at European level.



**INNOVA**<sup>®</sup>  
BY FAVETON<sup>®</sup>  
FAMILIES

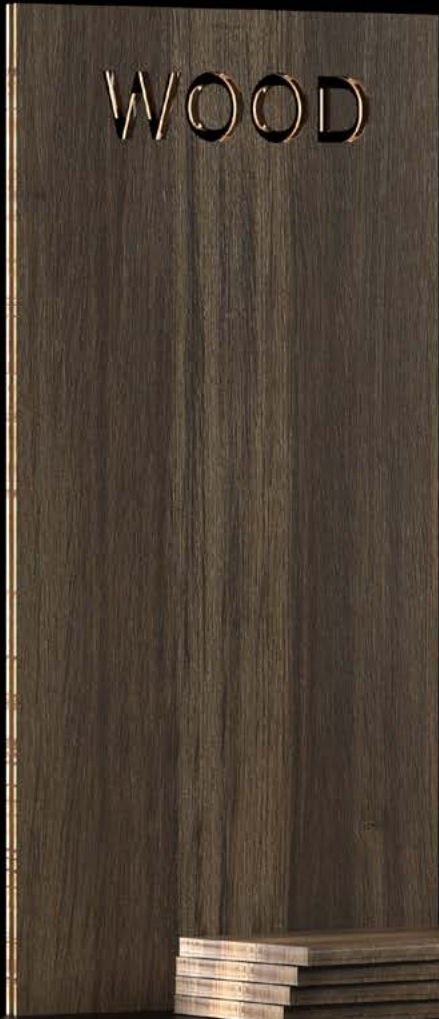
TEXTILE



ROCKS







#### 4.1 TEXTILE Family

\_TX01\_SEDA

\_TX02\_RAFFIA

\_TX03\_MAYA

#### 4.2 ROCKS Family

\_RK01\_MIST

\_RK02\_MIST DARK

\_RK03\_BYBLOS

\_RK04\_KALA

\_RK05\_PERSA

\_RK06\_LASCA

#### 4.3 WOOD Family

\_WD01\_ZENO

\_WD02\_DEKA

\_WD03\_NOGA

\_WD04\_JAMBI

\_WD05\_QUERCU

#### 4.4 CEMENT Family

\_CM01\_BETEX

#### 4.5 FAVETON *ExPRESSION*

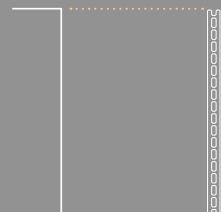
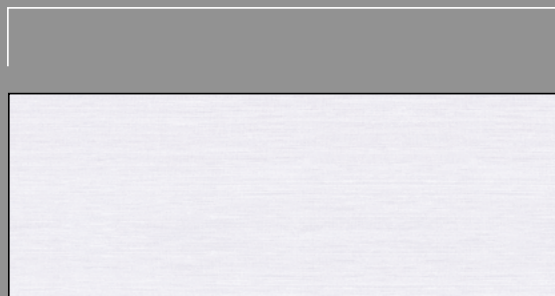
\_EX01\_ACQUAREL

\_EX02\_PATTERN

\_EX03\_DRAFT

\_EX04\_PAPER

200 a 1500 mm.

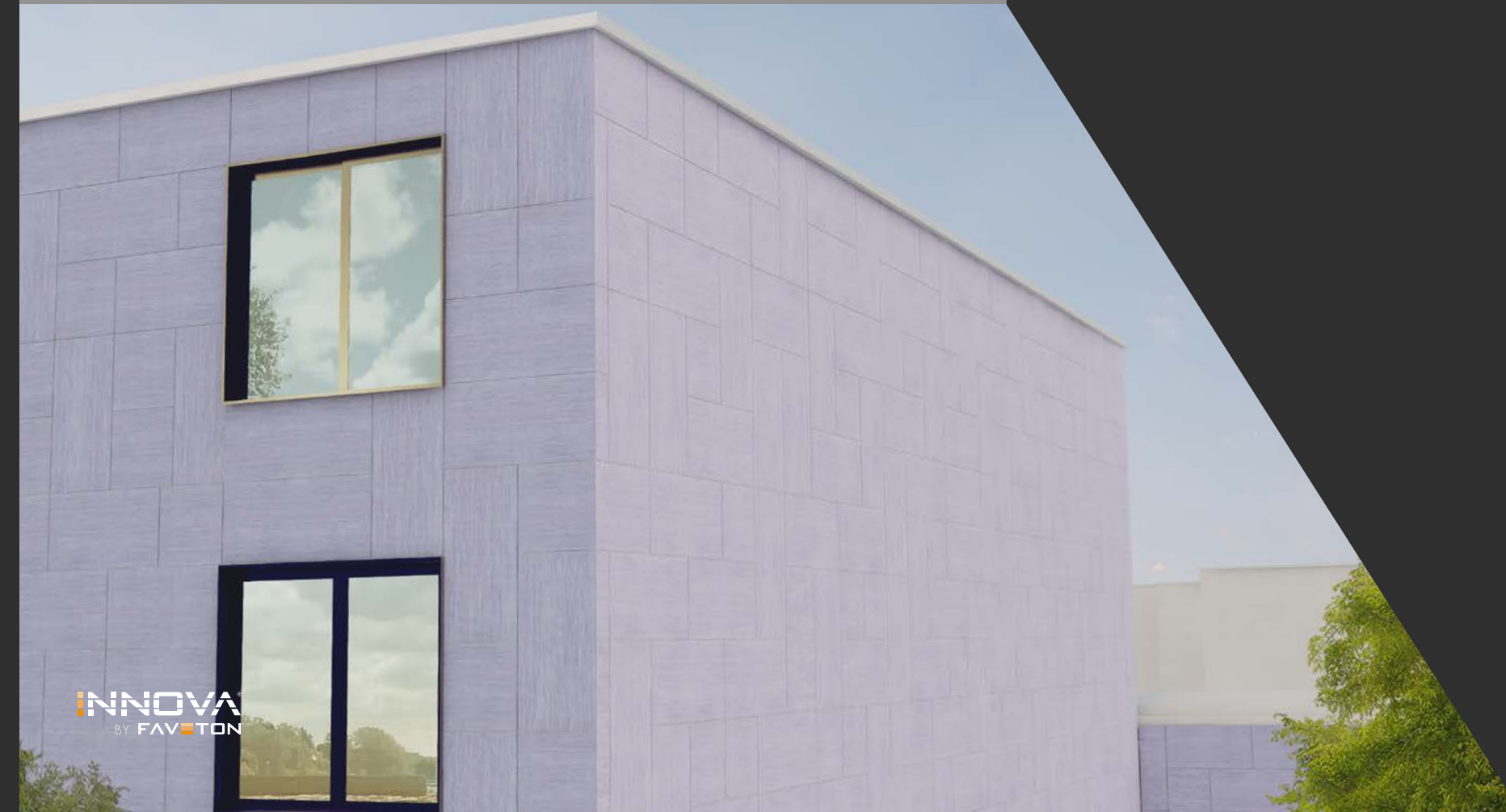


200  
a  
600 mm.

Family **TEXTILE**

# TX01 SILK

Natural fabric with soft texture.





Family **TEXTILE**

# TX02 RAFFIA

Fabric formed by a set of elements crossing each other and creating grids.

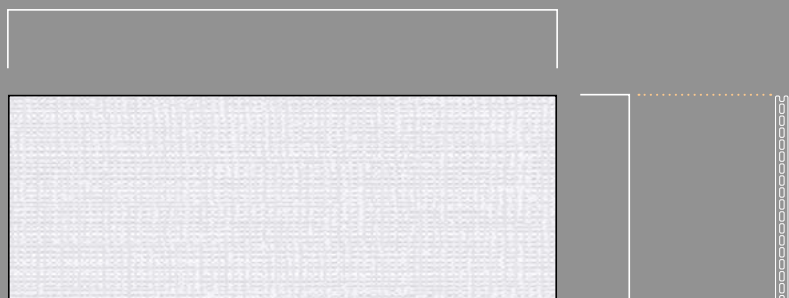
200  
a  
600 mm.

200 a 1500 mm.





200 a 1500 mm.



200  
a  
600 mm.

Family **TEXTILE**

# TX03 MAYA

Fine fabric that creates a net.

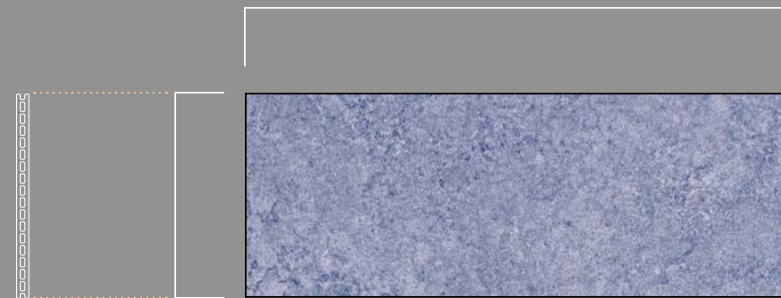
Family **ROCKS**

# RK01 MIST

Clear greyish stone with a veil of haze.

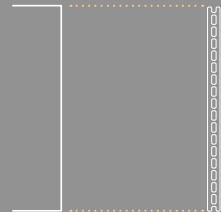
200  
a  
600 mm.

200 a 1500 mm.





200 a 1500 mm.



200  
a  
600 mm.

Family **ROCKS**

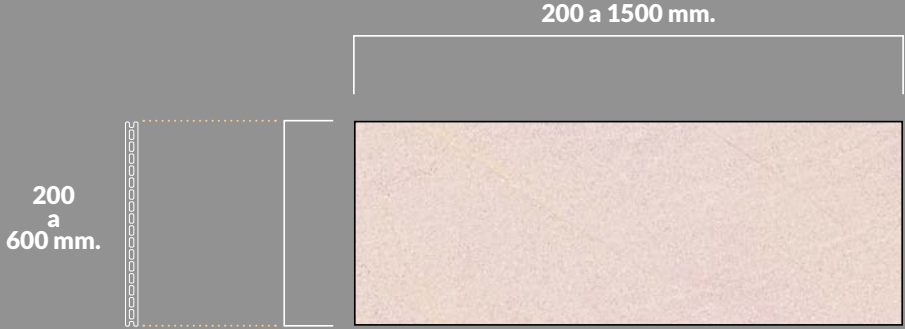
# RK02 **MIST DARK**

Dark stone with points of light and  
brightness like a starry sky.

Family **ROCKS**

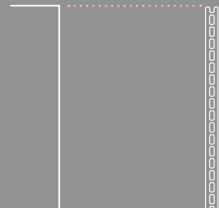
# RK03 BYBLOS

Marbled pink stone.





200 a 1500 mm.



200  
a  
600 mm.

Family **ROCKS**

# RK04 KALA

Reproduction of calacata marble.

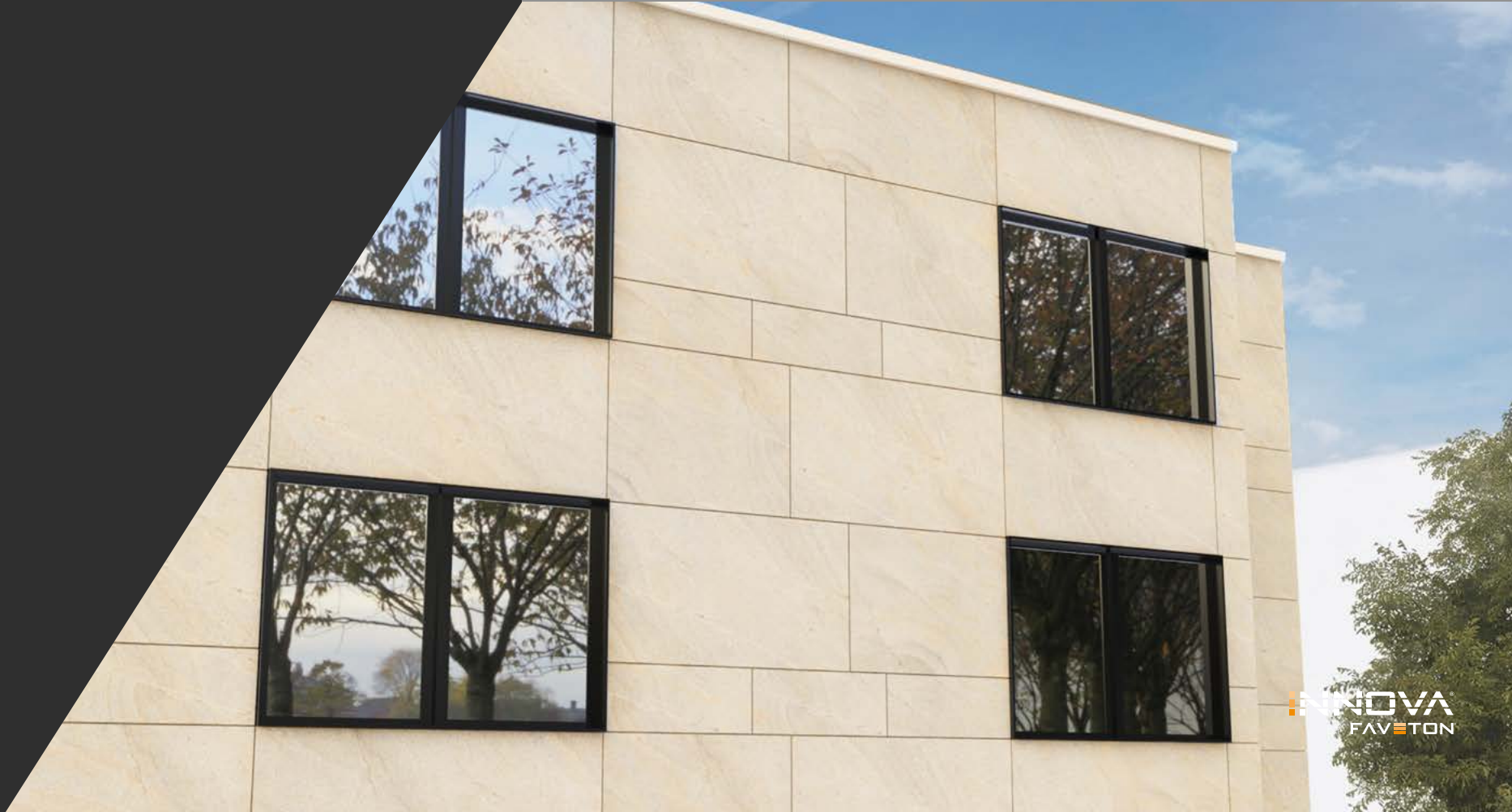
Family **ROCKS**

# RK05 PERSA

Desert coloured sandstone.

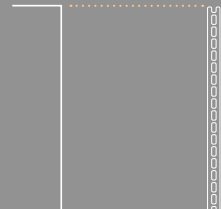
200  
a  
600 mm.

200 a 1500 mm.





200 a 1500 mm.



200  
a  
600 mm.

Family **ROCKS**

# RK06 LASCA

Black slate stone.

Family **WOOD**

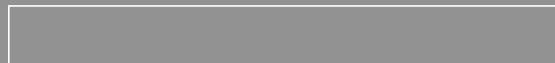
# WD01 ZENO

Reproduction of medium wood, caramel colour and very veined.





1200 mm.



250 mm.

Family **WOOD**

# WD02 DEKA

Wood stripped in white,  
nordic style.

Family **WOOD**

# WD03 NOGA

Dark and veined walnut wood.



1200 mm.



250 mm.

Family **WOOD**

# WD04 JAMBI

Medium-light wood, as grated  
by a rake.





Family **WOOD**

# WD05 QUERCU

Wood with two tones of vein, one dark and another caramel.



200 a 1500 mm.



200  
a  
600 mm.

Family **CEMENT**

# CM01BETEX

Texture of light grey polished  
concrete.



Family **ExPRESSION**

# EX01 ACQUAREL

A soft watercolor.

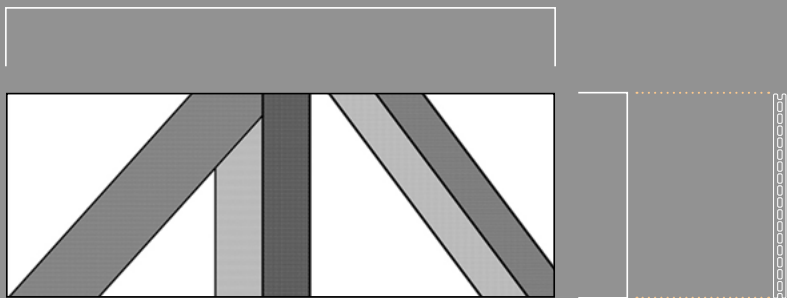
200 a 1500 mm.

200  
a  
600 mm.





200 a 1500 mm.



200  
a  
600 mm.

Family **EXPRESSION**

# EX02 PATTERN

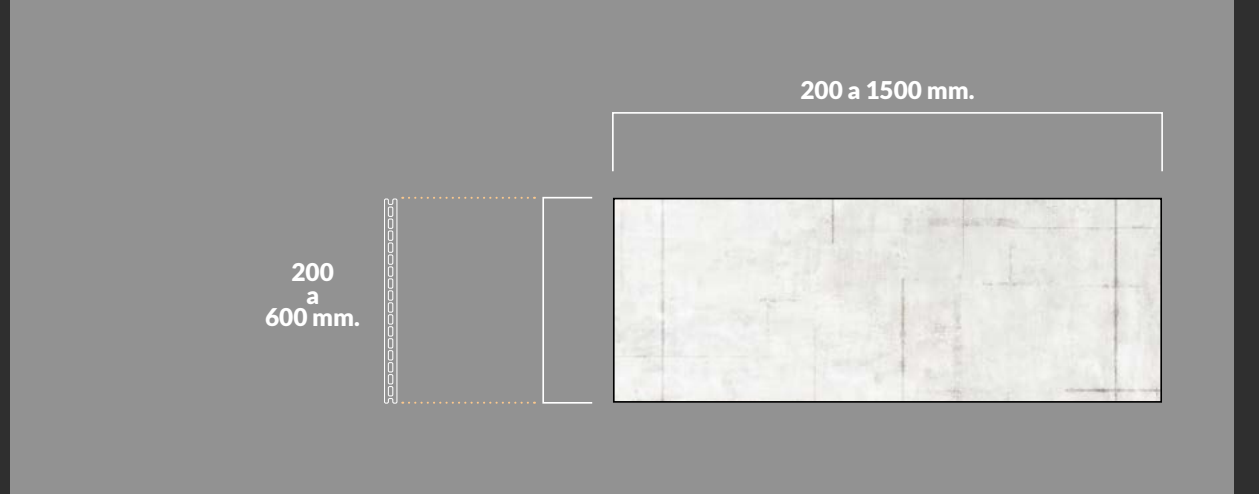
Pattern in a polygonal design.



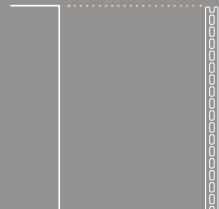
Family **EXPRESSION**

# EX03 DRAFT

Freehand drawn lines.



200 a 1500 mm.



200  
a  
600 mm.

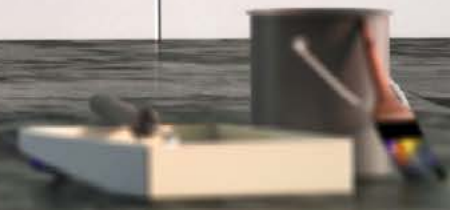
Family **EXPRESSION**

# EX04 PAPER

Reproduction of crumpled paper.







# Create

with  
us!

Our product is highly versatile and open to many possibilities. **Do not hesitate to contact us if you have creative ideas on how to use INNOVA in any of your projects.**

**INNOVA**<sup>®</sup>  
BY **FAVETON**<sup>®</sup>

---

✉ [export@faveton.com](mailto:export@faveton.com)

FAVETON ESPAÑA /// 2018 \_ MUEL (Zaragoza) / Tel: (+34) 976 140 311

**[www.faveton.com](http://www.faveton.com)**